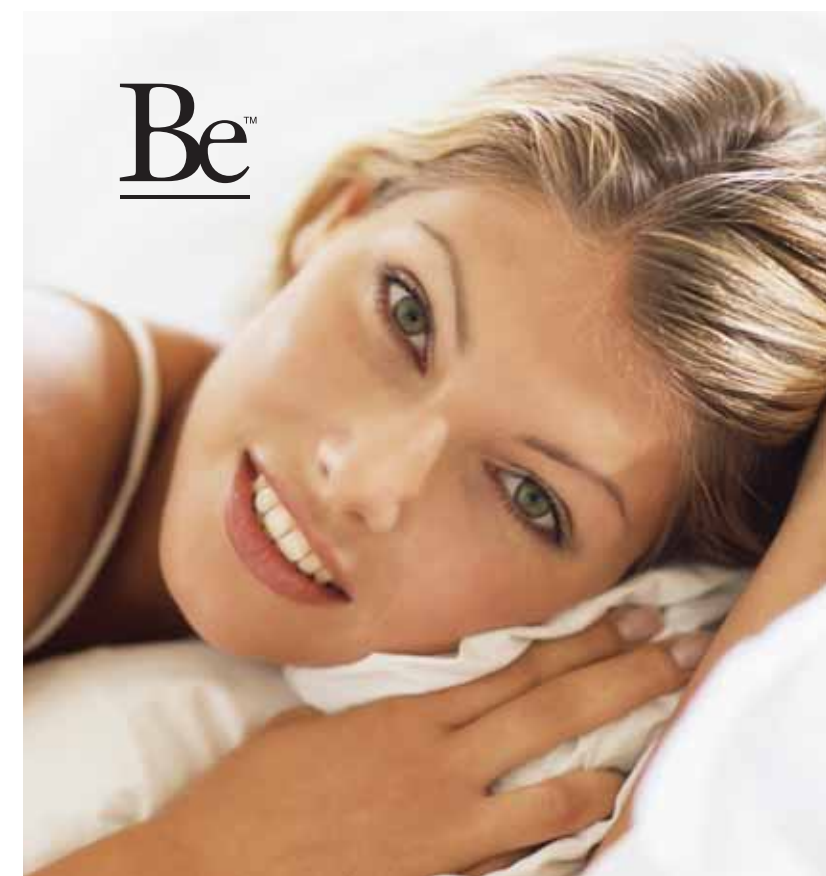


Be™



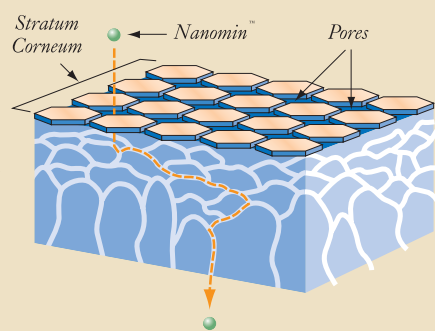
## Be™ Skin Care System

BEAUTY TODAY ENCOMPASSES MORE THAN JUST PHYSICAL APPEARANCE—IT'S ALSO A REFLECTION OF EACH OF OUR UNIQUE PERSONAL QUALITIES. BUT, LIKE ALL THINGS WE VALUE, BEAUTY MUST BE CARED FOR AND RESPECTED, BOTH INSIDE AND OUT.

BE™ IS A FOUR-STEP SKIN CARE SYSTEM THAT NURTURES OUR INWARD GLOW BY COMBINING THE POWER OF NATURE WITH THE BEST OF SCIENCE. BE™ PRODUCTS FEATURE OVER 100 POTENT BOTANICALS MIXED WITH EXCLUSIVE NANOMINS™, WHICH ARE ENCAPSULATED MICRONUTRIENTS THAT NOURISH DEEP WITHIN THE SKIN.

LET BE™ REVEAL YOUR INNER BEAUTY WITH SOFTER, HEALTHIER, MORE RADIANT SKIN.

**Be™ Nanomins™**  
Essential nutrients are delivered through exclusive Nanomins™ in every product, promoting optimal cell renewal and strength from within for a healthy, glowing complexion that defies the signs of aging.



**Be™ Complete System (Normal to Dry Skin)**  
Provides rich moisturization for skin that thirsts for maximum hydration and renewal. System includes Creamy Cleanser, Hydrating Refiner, Day Veil™ Creme, Night Nourishing Creme, Day Energy™ Serum, and Night Recovery Serum.

Item 17840

**Be™ Complete System (Normal to Combination/Oily Skin)**  
Keeps normal to combination or oily skin in perfect balance. System includes Foaming Cleanser, Mattefying Refiner, Day Veil™ Lotion, Night Nourishing Lotion, Day Energy™ Serum, and Night Recovery Serum.

Item 17839

**Be™ Essential Skin Care Set (Normal to Dry Skin)**  
This starter set contains the basics to care for normal to dry skin: Creamy Cleanser, Hydrating Refiner, Day Veil™ Creme, and Night Nourishing Creme.

Item 18159

**Be™ Essential Skin Care Set (Normal to Combination/Oily Skin)**  
Includes the daily essentials for normal to combination or oily skin: Foaming Cleanser, Mattefying Refiner, Day Veil™ Lotion, and Night Nourishing Lotion.

Item 18158



### CLEANSE

**Creamy Cleanser**

Pamper your complexion with a gentle cleanser that leaves skin feeling soft, smooth, and hydrated. This elegant, soap-free lotion contains more than 15 skin-nurturing botanicals, including extracts of chamomile, licorice, birch leaf, and oat.

Item 17829 4.2 oz

**Foaming Cleanser**

Enjoy skin that is scrupulously clean when you use this refreshing, water-activated daily cleanser formulated with pineapple, bitter orange, and lemon extracts.

Item 17830 4.2 oz



### REFINE

**Hydrating Refiner**

Soothe and refine pores with a refreshing alcohol-free tonic infused with polyphenol-rich oolong tea, chamomile, and cucumber extracts.

Item 17831 4.2 oz

**Mattefying Refiner**

Control shine and diminish the appearance of pores with this gentle, alcohol-free tonic containing oolong tea and pumpkin seed extract.

Item 17832 4.2 oz



### ACTIVATE

**Day Energy™ Serum**

Formulated for daytime use, this serum fortifies the skin's natural defenses against pollution that can age the skin. Energizing extracts of ginseng, ginkgo, and vitamin C are combined with ectoin, a unique marine flora that strengthens Langerhans cells, the skin's first line of defense, to help maintain a bright, clear, healthy complexion all day long.

Item 17833 .5 oz

**Night Recovery Serum**

This potent elixir relieves the visible signs of stress and fatigue overnight. Evening primrose oil, tocotrienols, and date palm extract intensify the skin's nighttime renewal process, increasing cellular respiration and the release of cell toxins so skin looks smoother, firmer, and renewed each morning.

Item 17838 .5 oz



### HYDRATE

**Day Veil™ Creme & Lotion**

Restore moisture while protecting your skin against the drying effects of sun, wind, and central air. This daily moisturizer features over 25 botanical and plant extracts, including grapeseed polyphenols, licorice, and mineral-enriched seaweed extracts.

Choose the creme for normal to dry skin or the lotion for normal to combination or oily skin.

**Day Veil™ Creme**  
Item 17834 1 oz

**Day Veil™ Lotion**  
Item 17835 1 oz

**Night Nourishing Creme & Lotion**

Replenish moisture and help repair the skin's natural lipid barrier, creating soft, smooth, supple skin overnight. This nutritious blend includes soy and rosemary extract and is available in a creme or lotion for different skin types.

**Night Nourishing Creme**  
Item 17836 1 oz

**Night Nourishing Lotion**  
Item 17837 1 oz

"I've been using Be™ for several months. I've noticed a softer, smoother look to my skin, fine lines are disappearing, and my pores are smaller! My daughter says I look younger than I am."

—Linda W.

An independent clinical study shows that, in just 14 days, Be™ Complete System significantly improves skin radiance, clarity, and moisture content, while minimizing the appearance of fine lines, wrinkles, and dryness.

Women using the Be™ Complete Skin Care System reported the following results after six weeks:

- 50% decrease in fine lines and wrinkles
- 51% increase in skin radiance and clarity
- 55% increase in skin moisture content
- 57% decrease in skin dryness

got  
**PREVENTION?**  
www.gotPREVENTION.com